

**IMOTEK**



**IMOTEK**



**IMOTEK**



**IMOTEK**



**IMOTEK**



**IMOTEK**



**IMOTEK**



**IMOTEK**



**IMOTEK**



**IMOTEK**

International Ltd

Veterinary Catalogue No. 5

[www.imotek.com](http://www.imotek.com)  
[www.imotekshop.co.uk](http://www.imotekshop.co.uk)

# IMOTEK SHOP

Announcing the launch of Imotek's new online store

[www.imotekshop.co.uk](http://www.imotekshop.co.uk)

## Categories Include

Disinfectant and Cleaning

ECG Accessories

ECG Machines

ECG Paper

Monitors

Paper - Black and White Thermal

Paper - Blue Film

Paper - Colour Print Packs

Printers - Black and White Thermal

Printers - Colour

Ultrasound Accessories

Ultrasound Probe Covers

Ultrasound Scanners - Dust Covers

Ultrasound Scanning Gel

Veterinary ECG Machines

Veterinary Scales

Veterinary Scanning Gel

- Wide range of products available
- Very competitive pricing
- Delivery with-in 2-3 working days (stocked items)
- Register and store your details for maximum convenience.
- Secure online payment
- Benefit from special online offers

## Some of our top selling products Include



### Vet Gel

Veterinary Ultrasound Gel - Box of 12 Bottles



### UPP-110HG

High Gloss Printer Paper



### UP-897MD

A6 black and white thermal video printer.



### P80B / CT3000B

3 Channel ECG

# IMOTEK International Ltd

**Integral to our business is customer care, forming the foundations for our high levels of service and quality assurance from the initial enquiry through to the after-sales service support.**

IMOTEK offers a large range of Veterinary products to Small Animal Practices and Equine Clinics, including Ultrasound and MRI scanners, video printers and peripherals.

We at Imotek endeavour to uphold our strong position in the veterinary market, providing high-quality products and services, continuing to meet the needs of our customers and striving to maintain our high levels of customer satisfaction.

## Technical Service Support

Imotek Service Department is an official Service Centre for large brands such as Esaote, Mitsubishi and Sony. The office is staffed with service professionals that can provide fast, expert assistance for both routine and emergency situations.

## Environmental Statement

Imotek is an environmentally conscious company and will endeavour to improve the management of energy and resources in all activities. We will also improve the management of waste through minimization, re-use and recycling.

## Quality Control Accreditation

We have been independently assessed and meet the internationally recognized standard BS EN ISO 13485:2003

## Consumable Sales & Deliveries

Our sales team are able to advise you on the products you need. Once you have placed your order the goods will be shipped from our main stores.

## Consumable items available for next day delivery\*

\*Next day delivery available for orders placed before 12pm.

Imotek holds a wide range of stock however if a particular item is not in stock then we will advise you of the expected delivery date.

## HOW TO ORDER

It is now easier than ever to order from us with our new Web-shop facility; orders can be placed and paid for online quickly and efficiently.

Alternatively you can still order by contacting our sales team directly.

Telephone: (01487) 843193  
 Fax: (01487) 843030  
 E-mail: [sales@imotek.com](mailto:sales@imotek.com)  
 Web Shop: [www.imotekshop.co.uk](http://www.imotekshop.co.uk)

Post: Imotek International Ltd.  
 Imotek House  
 West Newlands  
 Industrial Estate  
 Somersham, Huntingdon,  
 Cambridgeshire PE28 3FF



Refurbished Equipment & Aquila Vet Pro	3
MyLabOne Vet	4
MyLabFive Vet	5
MyLab30 Vet Gold	6
MyLab40 Vet	7
MyLab50-70XVG Vet	8
MyLab Technologies	9
Ultrasound Probes	10
Vet MR	11-12
Vet MR Grande	13
Ellegro	14
Digital X-Ray / Pacs	15
MRI Printers / Recording	16
Mitsubishi Printers and Paper	17
Sony Printers and Paper	18
ECG Machines	19
ECG Paper / Veterinary Scales	20
Ultrasound Scanning Gel	21
Disinfectant & Cleaning / Diagnostic Sets	22
Service	23

# Diagnostic Ultrasound Products

Imotek has built up a reputation for being able to provide the veterinary market with high quality ultrasound scanners. Our broad range and competitive pricing helps ensure that we can meet your performance needs within your budget constraints.

## Refurbished Ultrasound Equipment

From time to time we are able to offer Ex-Demonstration or Refurbished Ultrasound systems

Including:

- MyLab Range
- Caris
- Caris Plus
- Megas GPX/CVX
- Technos Family
- AU4/ AU5
- Challenge



For further information on the systems we currently have available please call



The Aquila Pro offers small and mixed animal veterinarians worldwide a high quality black & white ultrasound scanner. The Aquila Pro provides the image quality needed to make reliable diagnoses, while remaining easy to operate and transport; necessities in the busy environment of the modern veterinary practice.

- Foetal age tables and report pages for equine, bovine, sheep, swine, llama, feline/canine
- Measurement programs for tendons, cardiology and animal science
- Cine memory
- Integrated, backlit keyboard
- Portable
- 9" monitor
- Two probe connectors
- 32 Mb PC-compatible memory card for image storage (up to 160 images); optional max. 512 Mb
- Battery or mains operated
- Ergonomic, compact design
- Trolley Included
- Optional biopsy kits



## The Arm-held wearable ultrasound

The Esaote MyLabOneVet is the newest addition to the MyLab Ultrasound family. It has been developed specifically for the veterinary market. It is extremely portable with a dedicated user interface for Veterinary applications based on touch screen technology.

### Dimensions and weight of MyLabOneVet (arm-held)

- Approx. 275 (L) x 340 (W) x 115 (H) mm
- Approx. 6 kg for full configuration

### Features

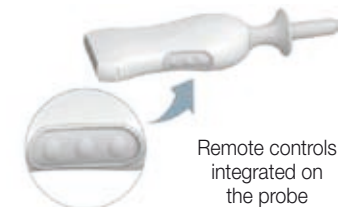
- 12" LCD touch screen
- Easy interface
- Flexible screen layout
- Application-based user interface
- Silicon cover to help protect the system against shocks

### Configuration

- X-View image enhancement as standard
- Colour, Power and PW Doppler (Optional)
- Linear, convex and phased array
- New high frequency linear probe
- 1 compact probe connector
- Integrated battery (3 hours)
- Patient database integrated (HD 160 GB)
- USB and wireless connection



Functional buttons on the handle



Remote controls integrated on the probe



Belt and Wrist Locker

Docking Station

Roll Stand

Auto-Orientation

# MyLabFive VET

## Affordable Portability Without Compromise

The Esaote MyLabFiveVet has been developed specifically for the veterinary market. The MyLabFive Vet combines flexibility and portability with an excellent image quality.

The revolutionary ergonomic design of the MyLabFiveVet allows the system to be used when and where it is needed. It is available as a portable system, or as a mobile unit when fully integrated into a trolley. The 15inch non-reflective TFT flat screen allows the system to be operated in a wide variety of light conditions. The full keyboard ensures that the compact dimensions do not compromise convenience and functionality.

The system is modular and fully configurable to the users needs. It is easy to upgrade from a black and white system with options such as Tissue Enhancement Imaging (TEI), Colour, Power, Pulsed Wave and directional Continuous Wave Doppler and Cardiology measurement package.

The new expanded platform delivers high performance in many applications:

- General Imaging
- Abdominal
- Cardiac
- Premium performance and compact lightweight design
- Range of multi-frequency broadband probes, **From 2.0 MHZ to 18 MHZ**
- Scanning up to **36cm depth**
- Linear, convex, micro-convex, phased array and veterinary endo-rectal
- Advanced application measurement and report packages
- Robust digital patient archive/management and full connectivity
- 'MyLab Desk' PC software
- Seamless connectivity via USB ports
- Musculoskeletal
- Equine Tendons
- Vascular



### Popular Configurations Include

1. Black and white only
2. PW / CW & Colour Doppler
3. Cardiac

The MyLabFive Vet can be individually configured to meet your exact requirements and can be upgraded as your expertise grows and needs increase.



Stroller Padded Carry Case

Light weight Folding Trolley

Height-Adjustable Trolley

Docking Station Trolley

For a full list of the module licenses available on the MyLabFiveVet See Page 9 – MyLab Technologies

# MyLab30 VET Gold Advanced Portable Solution for Veterinary Ultrasound

The new MyLab30Vet Gold is able to perfectly match the latest technological innovations with ease of use and portability.

Similar to the MyLabFiveVet, the MyLab30Vet Gold can be configured to meet any individual's user's needs. It is available as a portable system, or as a mobile unit when fully integrated into a trolley.

The increased processing power of the MyLab30Vet Gold also means it is capable of running advanced imaging features.

There are two probe connectors allowing fast selection and activation of different probes. It also supports the new range of IQ probes, with extended bandwidth and multiple adaptive layers.

Advanced image optimization methods, such as X-View and Tissue Enhanced Imaging are included as standard. This will ensure clear images even in difficult-to-scan patients.

Dedicated settings and automatic functions help the operator to reduce the time per exam, increasing productivity while maintaining high diagnostic confidence.

While ensuring very high diagnostic confidence, the new MyLab30Vet Gold offers a wide range of configurations to meet any clinical need, including;

- General Imaging
- Abdominal
- Musculoskeletal
- Equine Tendons
- Contrast Media
- Vascular
- Cardiac
- Advanced Cardiac
- Volumetric Scanning 3D/4D

The MyLab30Vet Gold can be individually configured to meet your exact requirements and can be upgraded as your expertise grows and needs increase.



### Popular configurations include

1. Enhanced Black and white only
2. PW / CW & Colour Doppler
3. Cardiac -Including new iQ probes
4. Advanced Cardiac



Stroller Padded Carry Case

Light weight Folding Trolley

Height-Adjustable Trolley

Docking Station Trolley

For a full list of the module licenses available on the MyLab30Vet Gold See Page 9 – MyLab Technologies

# MyLab40<sup>TM</sup> VET

## Advanced Mobile Solution for Veterinary Ultrasound

The MyLab40Vet is a compact console ultrasound system designed to be the ideal solution for all small, large or mixed animal veterinary clinics.

Developed on the acclaimed MyLab platform, the MyLab40Vet's license based modular architecture offers a wide range of application packages and can be personalized to every user's specific needs.

The MyLab40Vet's high sensitivity colour, CW and PW Doppler images are displayed on its 19" LCD monitor, increasing user comfort and reducing eyestrain. At the same time, the MyLab40Vet's streamlined console provides space for scanning accessories, is easy to move from room-to-room, and the system's full-size keyboard has been designed to be both user-intuitive and ergonomic; all factors that contribute to better workflow and efficiency.

The system can be equipped with a variety of digital, multi-frequency broadband probes including; Phased Array, Micro-Convex, Convex and Linear transducers. This complete range of probes allows all small and large animal applications to be covered with a single unit.

The system provides seamless connectivity, allowing images and cine clips to be exported via USB, CD or over a Local Area Network. The system also comes complete with 'MyLab Desk' a software for your PC. This allows the user to export images and patient data to a PC where further measurements and reporting can be carried out.



# MyLab50 MyLab60 MyLab70<sup>TM</sup> VET X<sup>V</sup>

## The MyLab range extends to cater for the most demanding users and niche applications

The revolutionary MyLab70 XVision Vet and MyLab70 XVG Vet have been designed to satisfy the most stringent diagnostic demands featuring high flexibility, dedicated ergonomics, improved value, and dedicated solutions for all applications.

These new high-end systems have full veterinary features, while the extending technologies and solutions of the MyLabGold platform bring the image quality up to the highest level. Major features like dedicated veterinary patient ID screen, dedicated structure of veterinary applications and presets, veterinary application icons and body marks, veterinary abdominal measurements, reproductive gestational age and cardiac calculations make this system a truly unique dedicated veterinary ultrasound system.

Advanced technologies like X-View, M-View, advanced cardio modules, high definition colour Doppler and the large number of probes offer a wide range of imaging processing tools to reach the highest level of clinical results in all the applications and all the modalities.



### Extending Technologies and Solutions

#### eXtreme View

XView image processing, eliminates speckle and noise artefacts, dynamically enhances tissue margins, improves tissue differentiation and increases diagnostic confidence.

#### High Frequency Imaging

The superior limit of the bandwidth on linear transducers (up to 18 MHz) offers detailed and precise imaging in very superficial investigation.

#### PBI (Pure Brilliance Imaging)

Optimises and enhances the image quality by automatically utilising the entire dynamic range available and providing automatic enhancement of the B-Mode image.

#### CnTI™ (Contrast Tuned Imaging)

CnTI can provide impressive clinical results due to precise micro-bubble detection in all modalities and applications.

#### Virtual Navigator (Fusion Imaging)

Virtual Navigator is a revolutionary technology able to combine the advantages of real-time ultrasound imaging with CT/MR images' high spatial and contrast resolution.

#### Elastosonography (ElaXto)

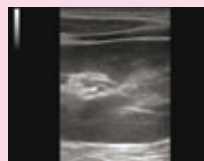
Differences in tissue responses to compression or vibration are detected and visualised in real-time, highlighting soft and/or hard structures.

# MyLab70<sup>TM</sup> VET X<sup>V</sup> X<sup>V</sup>G



**TP View** - available on all linear transducers within the MyLab range

The TP View feature allows the field of view to be enlarged without losing resolution by using beam steering technology.



Standard Linear Image



Linear Image using TP-View

Combined with new extended bandwidth, the LA332 IQ Probe allows high resolution images of deeper structures to be easily acquired.

**LA332 Probe**  
3.5/5.0/6.6/10 Mhz



For a full list of the module licenses available on the MyLab40Vet  
See Page 9 – MyLab Technologies

For a full list of the module licenses available on the MyLab70Vet systems  
See Page 9 – MyLab Technologies

## MyLab System Matrix; Veterinary

### Key

Included as standard	<b>S</b>
Optional Module/License	<b>O</b>
Not Available	<b>NA</b>

	One Vet	Five Vet	30 Vet Gold	40 Vet	70 X-Vision Vet	70 XVG Vet
<b>General Imaging Licence</b> (Veterinary specific)	S	S	S	S	S	S
<b>CD/DVD Drive</b>	O	O	S	S	S	S
<b>USB Drives</b>	S	S	S	S	S	S
<b>Internal Battery Kit</b>	S	O	O	NA	NA	NA
<b>Auto Adjust Gain</b> - Automatically adjusts the gain setting in B-Mode & Doppler.	S	S	S	S	S	S
<b>B Mode Steer</b> - Allows the linear images to the steer left or right	S	S	S	S	S	S
<b>TP-View</b> - Enlarges the field of view of linear probes	S	S	S	S	S	S
<b>TEI Imaging</b> - Tissue Enhancement Imaging	S	S	S	S	S	S
<b>CLIPS Archiving</b> - Allows the storage of Video Clips	O	O	S	O	S	S
<b>X-View</b> - Real-time adaptive algorithm producing enhanced images and reduces speckle	S	O	S	S	O	S
<b>M-View</b> - Combines standard and steered ultrasound imaging to detect all anatomical structures	O*	O	O	NA	S	S
<b>Microconvex, Convex &amp; Linear Array</b>	S	S	S	S	S	S
<b>Phased Array</b>	O*	O	O	O	S	S
<b>IQ Probes</b> - extended bandwidth and multiple adaptive layers.	O*	NA	O	NA	S	S
<b>Pulsed Wave &amp; Continuous Wave Doppler</b>	O	O	O	O	S	S
<b>Colour Doppler</b>	O	O	O	O	S	S
<b>Cardiac Licence</b>	O*	O	O	O	O	O
<b>CMM</b> - Compass M-Mode, provides real-time anatomically corrected M-Mode tracing.	O*	O	O	O	O	O
<b>TVM</b> - Tissue Velocity Mapping for LV motion analysis	NA	O	O	O	O	O
<b>CnTI</b> - Contrast Tuned Imaging for contrast media procedures	NA	O	O	O	O	O
<b>VPAN</b> - Panoramic imaging increases field of view to allow entire anatomical structure displayed on screen.	NA	O	O	O	O	O
<b>Stress Echo</b> - Dedicated report template for a complete wall motion score and ejection fraction reporting	NA	O	O	O	O	O
<b>ElaXto</b> - Elastasonography allows for real-time assessment of elasticity or stiffness of tissue	NA	NA	NA	NA	O	O
<b>3D/4D Imaging</b> - Volumetric scanning tool	NA	NA	O	O	O	O
<b>X-Strain</b> - Advanced cardiac technique for myocardial function evaluation.	NA	NA	O	NA	O	O
<b>Virtual Navigator</b> - Advanced tool for Fusion imaging (US & CT / MR)	NA	NA	NA	NA	O	O
<b>PBI</b> - Pure Brilliance Imaging to optimise and enhance image quality	NA	NA	NA	NA	S	S
<b>HPRF</b> - High Pulse Repetition Frequency. Ability to resolve higher flow rates	O*	O	O	O	S	S
<b>DICOM Licence</b> - Allows for files to be stored in DICOM Format	O	O	O	O	O	O

\* TBC

## Probe Options



### Annular Array

Suitable for the majority of applications.

Probe	Frequency Range	Probe	Frequency Range
<b>2535AA</b>	2.5/3.5 MHz	<b>5075AA</b>	5.0/7.5 MHz
<b>3550AA</b>	3.5/5.0 MHz	<b>7510AA</b>	7.5/10 MHz



### Phased Array

Suitable for the majority of applications. Excellent for Hearts.

Probe	Frequency Range	Probe	Frequency Range
<b>PA230</b>	2.0/2.5/3.5 MHz	<b>PA122</b>	4.0/5.0/7.5 MHz
<b>PA121</b>	3.5/5.0 MHz	<b>PA023</b>	7.5/10 MHz



### IQ Phased Array Probe

Suitable for majority of applications. Excellent for hearts. Available on high end systems.

Probe	Frequency Range
<b>PA240</b>	2.0/2.5/3.5 MHz



### Linear Array

Exquisite detail especially at the higher frequencies.

Probe	Frequency Range
<b>LA332</b>	3.5/5.0/6.6/10 MHz
<b>LA523</b>	7.5/10/12 MHz
<b>LA435</b>	10/12/15/18 MHz



### Microconvex

Large Field of view provides excellent detail in the abdomen.

Probe	Frequency Range
<b>CA123</b>	5.0/6.6/8.0 MHz



### Curvilinear

Deep penetration, ideal for Equine abdomens.

Probe	Frequency Range
<b>CA431</b>	2.5/3.5/5.0/6.6 MHz
<b>CA621</b>	2.5/3.5/5.0/6.6 MHz



### Rectal Linear

Suitable for Reproduction scanning and Equine tendons.

Probe	Frequency Range
<b>LV513</b>	5.0/7.5 MHz

Probe Frequency operation ranges may vary

*For further information on the systems we currently have available please call.*



# Vet-MR

The first MRI System for Vets



## Magnetic Resonance Imaging (MRI)

Is a modern imaging technique that produces very detailed anatomical images without radiation exposure. In fact it is the preferred modality for the imaging of any kind of soft tissue and is the method of choice for imaging trauma and pathologies of the central nervous system and joints.

## MRI to Own

The Vet MR is the only MRI system specifically developed to meet the needs of the Veterinary market. The unique design of the Vet MR places this imaging modality within grasp of the Veterinary practice to own for the very first time. The Vet MR allows you to run exams at any time with no need to book in advance or organise exams elsewhere. No longer have the inconvenience of being dependent on expensive MRI providers, or have to reply on the uncertain availability and sometimes controversial use of hospital machines during unsociable hours.

## Easy Start

The Vet MR comes with pre set protocols for the first time user. Running the familiar Windows based operating system makes learning easy. It also means networking is simple and that you can archive your images in common PC compatible file formats as well as the DICOM standard and proprietary formats. The Vet MR also incorporates Optical and CD recordable drives to make file exchange as flexible as possible.

## Impressive Profitability

Vet MR has a minimal maintenance permanent magnet that requires no special cooling systems. The power consumption is a very low 1kW meaning that it can be run from a standard power outlet.

**Ask for your customised break-even analysis; you will be impressed by its profitability!**

### High Image Quality

- Thanks to Esaote's long term experience in MRI

### Functional Design:

- Simple and fast handling of the animal
- Open design allows easy positioning

### User Friendly:

- An intuitive, operating console
- Pre-set protocols for the first time user
- A wide range of scanning parameters
- Start up with only three days of training
- Further advanced training available

### Cost Effective:

- Low maintenance costs
- No cryogenes used
- Low power requirements (1kW)
- No civil works required

### Easy to Install:

- One room installation (minimum room size only 12sqm.)
- Dedicated RF shielding solution provided

The system is compatible with standard anaesthetic equipment only requiring longer anaesthetic circuits.

The Vet MR includes a complete set of high performance receiving coils to cover all anatomical areas.



### System Specification:

- Open, C-shaped, permanent magnet.
- Magnet field: 0.2T, vertical.
- Total system weight inc. operators console: 2250Kg shielding cage excluded
- Homogeneity (<+/-4ppm.
- Gradient strength (20mT/m).
- Rise Time: 0.8 msec (0-99%)
- Slew rate: 25mT/m/ms.
- Wide Range of Coils. (Automatic recognition).
- Dual Phased Array Coils Technology.

### Acquisition sequences:

- Real time positioning tool
- Scout view: 3 orthogonal planes.
- Spin Echo T1-weighted
- Spin Echo Half Echo
- Spin Echo Half Fourier
- Echo T2-weighted
- Multi Echo (1st echo 28 ms, 2nd echo 90ms)
- Turbo Spin Echo T2-weighted, TSE 5
- Turbo Multi Echo (1st echo 28ms, 2nd echo 90ms)
- Gradient Echo
- Inversion Recovery
- Short Tau Inversion Recovery (STIR -Spin Echo)
- Short Tau Inversion Recovery (GE-STIR)
- Fluid Attenuation Inversion Recovery (FLAIR)
- 3D Gradient Echo (isotropic and anisotropic version)
- 3D CE (contrast enhanced)
- SE T1 3D, SE T1 HF 3D, STIR 3D, STIR 3D HF, GE STIR 3D,
- SPEED SPIN ECHO T2

### Imaging Capabilities

FOV in visualization	-170mm
Min slice thickness	-2D 2.0mm -3D 0.6mm
Maximum number of slices:	-2D 96 -3D 128
Matrix:	512 x 512, variable.

### Networking and Printing:

- Full DICOM capability
  - Sending receiving images
  - Exporting images on removable media
  - DICOM printing
  - Worklist Modality
- Easy connection to PACS and workstations
- Easy PC connection
- Digital or analogue printer connection

### Technical Support

- Remote connection for prompt assistance
- Automatic self check

## Common Questions and Answers

### What is Installed?

- Magnet and patient table
- Operator console
- RF Shielding: Either a shielding box is used or alternatively dedicated RF shielding can be used.



### What is the site requirements?

- Vet-MR only 12sq.m. (Minimum space requirement when using dedicated RF shielding). Vet-MR Grande 27sq.m.
- We recommend air conditioning and ensure that the floor is strong enough.
  - The floor must withstand a point loading of 400Kgs
  - Temperature needs to be maintained between 20-26OC. Temperature variation +/- 30C / hr
- Runs from the standard mains supply.
  - Power requirements:
 

Max power	1.0 kW
Stand-by	0.2 kW
- We check for magnetic interference and may recommend a compensation module.

### How would we start?

The system comes with pre set protocols and 3 days of training. Further training is then available either on or offsite, at an additional cost. Please ask for details.

### What about interpretation?

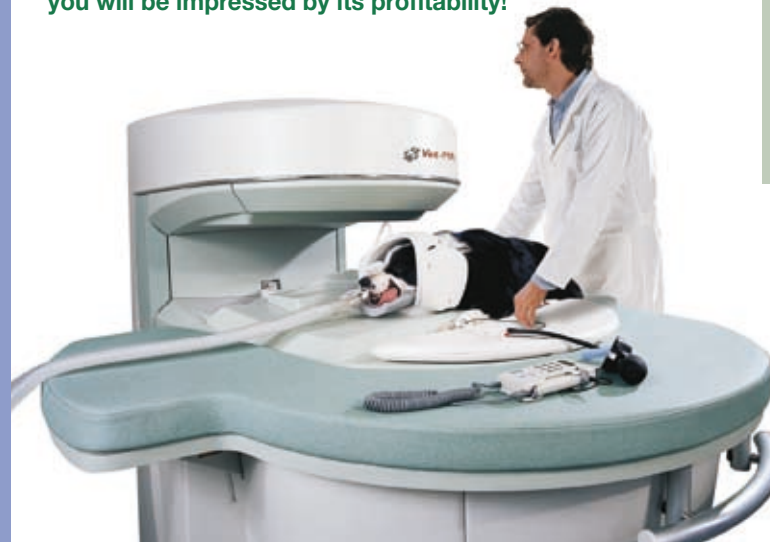
Interpretation is a skill that we are unable to provide in just a few days. However the systems file exchange flexibility makes it really easy to send images away for interpretation or over reading. Images can be sent digitally by email, or by post on CD, optical disk or hard copy.

### How many exams would I need to perform in order to pay for my investment?

The breakeven figure varies from site to site depending on the finance method, location and scan charge. However assuming you were to lease the system over 5 years a conservative estimate of the monthly throughput required to break-even would be around 14 patients (Vet-MR) and 20 patients (Vet MR Grande). That's less than 1 patient a day.

### How can I pursue my interest?

We would be delighted to come and visit you in order to discuss the system with you. However we really recommend a site visit that we can easily arrange for you either with or even without a company representative present if you would prefer. Please call 01487 843193 for further details.





Building on the success of the Vet-MR, the new Grande is one of the first MRI systems uniquely designed to bring diagnostic MRI excellence to both small animal and equine imaging with notable cost effectiveness and ease of use.

Considering the increasing versatility of the veterinary marketplace, the Vet-MR Grande system has been carefully designed to also address the specific needs of both small animal and equine practitioners.

#### Small Animal

Vet-MR Grande includes a complete set of small animal receiving coils, providing high image quality for the different anatomic areas. Our dedicated coils are tailored to specific anatomy for the best image quality.

A specifically designed patient bed and wide opening provides easy access for the operator and facilitates positioning and handling of the animal. The large field of view also means large breeds can be accommodated easily.

The Vet-MR Grande is very easy to install, the minimum space required for small animal use is 5x5 m. The system uses a maintenance free permanent magnet and thanks to its low energy consumption, the system does not need any special power supply.

#### Equine

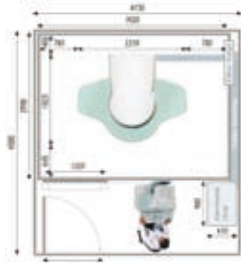
The Vet-MR Grande's large scanning surface and purposely designed magnet with its large field of view can considerably improve image quality allowing advanced diagnostic images of the head, neck and limbs of large animals to be produced.

Patient positioning is optimised using continuous visualization features. Patient monitoring is very easy as the animal is accessible during the exam reducing any risk for the patient. Vet MR Grande allows you to use your existing anaesthesia equipment.

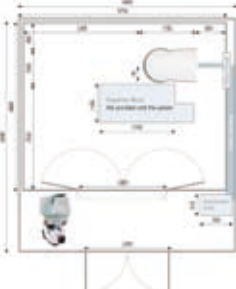
The Vet-MR Grande can deliver artefact-free images, of superior quality due to the absence of motion.

For practices that require the flexibility to scan limbs, heads and necks, the Vet-MR Grande Equine represents an elegant solution addressing corpus, tarsus, hock, brain, sinus and neck.

**Vet-MR Grande**  
Small animal



**Vet-MR Grande**  
equine



#### Brief Specifications

- Open, C Shaped, permanent magnet.
- Magnet field: 0.25T
- Total system weight: 8000 kg shielding cage excluded.
- FOV: 250mm
- Specific Esaote pavilion type shielding Perforated RF cage design - allows viewing from anywhere outside the RF room
- Total space requirement, including console: 27sqm
- Electrical requirements: 3 kW (standard 110-220V)
- Stainless Steel equine table for positioning flexibility

#### Affordable Investment

- No special cooling needed
- Standard power requirements
- Easy siting in existing facility (minimum room size 27 m<sup>2</sup>)

#### User Friendly

- Fast & easy patient positioning
- Continuous visualization
- Open construction for easy patient access
- Veterinary Protocol Operating System

#### High Performance

- Excellent soft tissue
- Full Connectivity

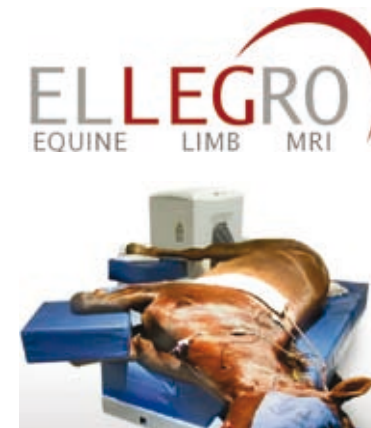
The turnkey Vet-MR Grande system includes the Vet-MR MRI unit in addition to a unique, perforated RF cage design that allows viewing from anywhere outside the enclosure and a robust Stainless Steel equine table for positioning flexibility.



# Ellegro Equine Limb MRI

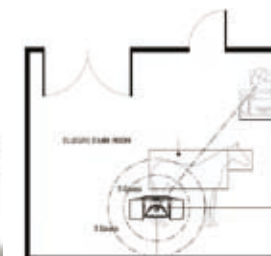
**ELLEGRO** is the ideal introduction of MRI for your equine practice. This limb MRI system is the most cost effective solution available delivering superb image quality and is easy to site.

- The ELLEGRO requires no RF shielding and operates on 110V.
- Immediate high quality full field-of-view imaging expedites diagnosis and treatment
- Compact design that can be easily installed into virtually any practice without RF shielding
- Pre programmed protocols that simplify and speed up examination procedure
- Full connectivity and user friendly interface
- The field of view gives you the ability to scan an entire joint in one acquisition



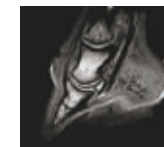
## Typical Ellegro Scan Suites

- Basic Site Requirements:
- Power Requirements:
- 110V dedicated line
- Total System Wt.: 2777 lbs
- RF Shielding: Integrated in system
- Temperature: 68° - 78° F
- Heat Output: 1365 BTU/hr

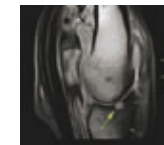


## Examples of typical equine limb case studies of the Foot, Fetlock and Carpus.

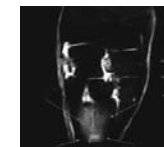
**Foot:** 0.7mm 3D GE T1 sequence used to better visualized bony margins including the subchondral plate and the signal of the associated articular cartilage. This pony has unremarkable articular cartilage signal within the coffin joint and proximal P2, but a moderate amount of decreased articular cartilage signal is seen in distal P1 at the pastern joint (arrows). This was a client owned animal, but similar changes are seen within the articular cartilage in other joints that have been dissected where articular cartilage degeneration was confirmed.



**Fetlock:** 5yr. old Thoroughbred horse with a severe left front lameness localized to the fetlock. SE T1W sagittal image shows a cyst-like erosion in proximal P1 (large arrow) and decreased T1 signal within the surrounding intramedullary bone, as well as dorsal distal MC3 (small arrows) that corresponded with increased STIR signal typical of bone edema/inflammation. Additional subchondral erosions were visible on the scan. The findings were consistent with an active, erosive arthritis.



**Carpus:** 4yr. old Arabian mare. History of middle carpal joint effusion. Lameness improves with intracarpal analgesia. Requests Carpus MRI, which revealed significant increased STIR signal within proximal MC3 consistent with a stress response/stress fracture injury. The origin of the proximal suspensory ligament at this level appeared unremarkable, as well as the bones and soft tissues of the middle carpal joint. STIR dorsal image.



Please contact us for the Grande's full specification and details on how this system could work for you.

# Digital X-Ray Systems

**Digital Radiography** is a form of x-ray imaging, where digital X-ray sensors are used instead of traditional photographic film.

Advantages include time efficiency through bypassing chemical processing and the ability to digitally transfer patient images.

Using the workstation software the images can then be post-processed/enhanced to highlight anatomy or pathology.

Digital radiography provides instant high quality images fully embedded in the electronic patient record with a minimum of dose.



## The Varian PaxScan®

At the heart of our DR system is the PaxScan 4030, a flat panel image processing subsystem. This replaces the film cassette and sends the image directly to the screen for review.

The PaxScan 4030 can be integrated into most existing X-Ray systems. We can also provide a complete veterinary digital x-ray solution, including tube, generator and floating top table.

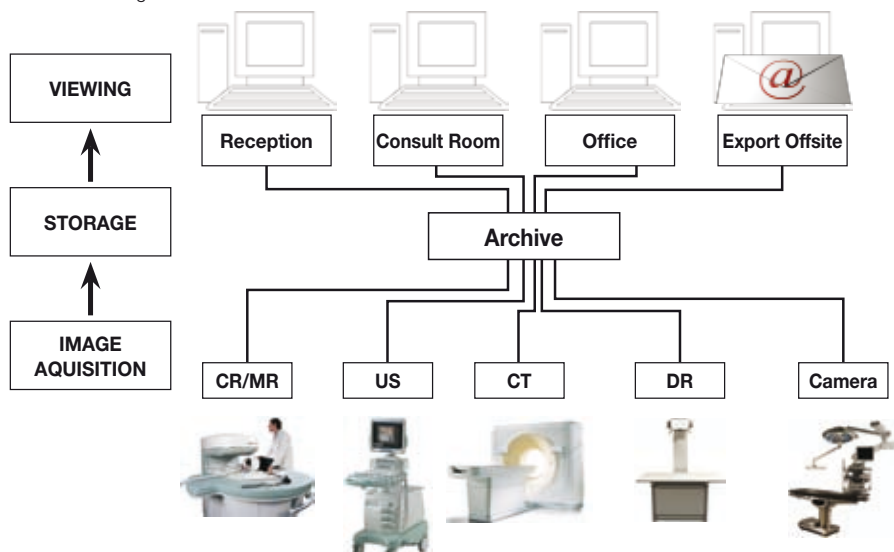
*We have access to a range of quality refurbished C-Arms and CT Scanners. Please contact us for stock availability.*

## PACS and DICOM Integration

A Complete Integrated Digital Imaging Solution is easily achievable.

Imotek can offer bespoke software solutions allowing full integration of patient files with diagnostic images, reports, notes and photos. This will allow you to:

- Quickly retrieve a patients full diagnostic history
- Review images with clients
- Compare new with previous studies
- Teach and educate
- Hold a comprehensive database of your client's records with stored images
- Eliminate film storage.



# MRI Printers

SONY

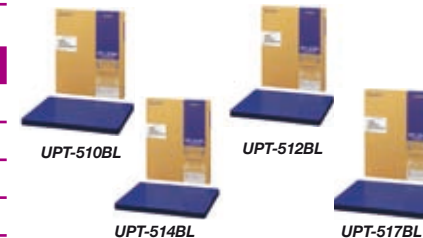
Specialist Dealer

Product	Description
<b>UP-DF550 Filmstation</b>	The UP-DF550 Digital Film Imager is a compact and high-speed FILMSTATION. It had been designed for use with MRI and CT diagnostic systems.



UP-DF550 Filmstation

BLUE FILM		
	Contents	Size
<b>UPT-510BL</b>	125 sheets of print film	8 x 10 inches
<b>UPT-512BL</b>	125 sheets of print film	10 x 12 inches
<b>UPT-514BL</b>	125 sheets of print film	11 x 14 inches
<b>UPT-517BL</b>	125 sheets of print film	14 x 17 inches



A4 BLACK & WHITE THERMAL PRINTER	
Product	Description
<b>UP-990AD</b>	A unique hybrid black and white printer that supports both analogue and digital applications. The full-page UP-990AD offers improved resolution of 325 dpi and faster print speed of approximately 8 seconds. Can print on blue film and high density paper.



UP-990AD

Paper for the UP-990AD Printer		
Product	Type	Contents
<b>UPP-210HD</b>	High Density Print Media	5 Rolls
<b>UPT-210BL</b>	Blue Transparency Film	5 Rolls



UPT-210BL

UPP-210HD

## Recording

Product	Description
<b>Sony DVO-100MD</b> DVD Recorder	Fully compliant with latest Medical Devices Directive (MDD) standards, the DVO-1000MD has been optimised for use in a wide range of surgical and other healthcare environments. Ideal for applications such as ultrasound, endoscopy and radiology, the DVO-1000MD allows recording and playback of images from a wide range of visible and non-visible light modalities.



DVO-100MD

<b>Mitsubishi HS-MD3000E</b> SVHS Recorder	The HS-MD3000E is a professional medical VCR with digital technologies for superior picture quality, easy operation and external remote control. Feature rich, the HS-MD3000E is ideal for use within the medical industry where there is a demand for high quality image recordings with superior picture quality. The optional interface board also allows the unit to be connected with other devices used within the medical industry.
---	--



HS-MD3000E

<b>SONY BZMD-1000</b>	The BZMD-1000 DICOM Capture Station is a state of the art solution for still/video acquisition and DICOM file creation. The unique one-piece design utilizes a 17-inch touch-screen with a powerful, yet simple user interface. The DICOM Capture Station supports the simultaneous acquisition of still and moving material and its association with patient data as per the DICOM standard. Patient data can either be collected from department information systems or entered manually by the operator.
-----------------------	---



BZMD-1000

# Mitsubishi Printers



As a **Mitsubishi Authorised Dealer** we carry the exceptional quality of Mitsubishi right through the sale to the highest level of service and support.

We make it easy for you to buy because we have been trained on the full line of products. We will endeavour to answer any questions and follow through with excellent service.



P93E






## A6 BLACK & WHITE THERMAL PRINTER

Product	Description
P93E	The P93DW is a high speed A6 digital black and white thermal printer producing 325dpi images. With its small footprint and user friendly controls it has been designed with medical applications in mind. High speed prints directly from any composite video source.
P93 DW	As above but with digital input. Easy to use, the P93DW produces high detailed images very quickly with USB 2.0.

# Mitsubishi Print Paper

## BLACK & WHITE Paper For use with Mitsubishi A6 Printers

Product	Description	Units	
K61B	Standard Contrast Media	1 box of 4 Rolls	
KP65HM	High Contrast Media	1 Box of 4 Rolls	
K91HG	High Gloss Media	1 Box of 4 Rolls	

As a **Mitsubishi authorised dealer** we have access to all **Mitsubishi** products including; B&W printers, colour printers, media/paper, large film printers VHS recorders.

Please contact us for further details.

Our entire product range can be viewed on our Web site [www.imotek.com](http://www.imotek.com)

# SONY Printers



As an **accredited Sony dealer** we receive technical support via a dedicated helpdesk, priority access to new products, and benefit from special offers and promotions that are not available anywhere else, so you always get value-for-money.

With regular in-depth training on Sony products, our sales team have the best possible knowledge, expertise and solutions helping you make the right choice for your needs.

## A6 BLACK & WHITE THERMAL PRINTER





Product	Description
UP-897MD	The UP-897MD is a compact A6-size monochrome video graphic printer for medical applications. Designed specifically for easy integration with medical diagnostic equipment such as ultrasound systems.
UP-D897	As above but with digital input. Providing high quality prints in approx. 2 seconds with the USB 2.0 High Speed Interface



UP-897MD

# SONY Printers

## Black & White Paper For use with A6 Thermal Printers

Product	Description	Units	
UPP-110HD	High Density Print Media	1 box of 10 Rolls	
UPP-110S	Standard Density Print Media	1 Box of 10 Rolls	
UPP-110HA	Superior Density Print Media	1 Box of 10 Rolls	
UPP-110HG	High Glossy Print Media	1 Box of 10 Rolls	

As an **accredited Sony dealer** we can supply all Sony products including; B&W printers, colour printers, media/paper, large film printers, DVD recorders & monitors.  
Please contact us for further details.

Our entire product range can be viewed on our Website [www.imotek.com](http://www.imotek.com)

# ECG Machines

## CT3000i

### 3 Channel ECG with Basic Programme

- Auto-start button automatically produces the ECG traces with Rhythm Strip.
- Filters for baseline, electrical and muscle tremor interference, providing clear traces.
- Lead off warning and identification.
- Useful copy button for extra ECG traces.
- Paper tray accommodates z-fold or roll paper.
- Manual button provides real time print-outs.
- Mains and battery operation. Battery recharges itself automatically and when fully charged provides 4 hours of continuous operation.
- Dimensions: 293 x 210 x 73mm. Weight: 2.9kg



CT3000i



CT8000i

## CT8000i

### 12 Channel ECG

- 12 lead, 3 Channel high-quality interpretive ECG with LCD screen and alpha-numeric keyboard.
- Paperless ECG option; download and electronically store ECG traces inside individual patients' records via RS232 port.
- Stand alone use and PC connectivity for paperless ECG options.
- Choice of both internal and external print formats, including automatic rhythm strip.
- One-touch automatic or instant real time operation.
- Internal memory for up to 45 stored ECG records.
- Digital filters for mains, base line and muscle tremor.
- Dedicated soft keys for ease of storing, printing and transmitting.
- Integral port to connect to a standard DeskJet or Laser printer for an A4 print out.
- Optional communication module (built-in LAN and modem connections).
- Mains/rechargeable battery operation.
- Dimensions: 285 x 195 x 70 mm Weight: 2.5 kg

## CT110

### CardioConcept



Using a conventional 10 lead ECG cable, the seca CT110 CardioConcept acquires the ECG from the patient directly into the treatment room computer.

The interface is easy to use and the ECG recording can be viewed, printed and archived into the practice's Patient Record system and viewed throughout the practice.

*All ECG's supplied complete with mains cable, patient cable, 500 disposable electrodes, alligator clips and pack of z-fold paper,*

# ECG, Paper and Accessories

Product Codes	Description
<b>MT153</b>	Paper Pack for Pocket K112 by Cardiorapid
<b>MT165</b>	Paper pack for P80 & CT3000 range
<b>MT143</b>	A4 Pack for P80 Six, P80 Power, CT6 and CT6P Range
<b>MT166</b>	for ArchiMed Range
<b>MT098</b>	Roll Paper for Cambridge ECG
<b>MT100</b>	Roll Paper for P80 & CT30000 Range
<b>MT108</b>	Paper for Nihon Koden 9020
<b>CT480ZPi</b>	Paper pack for CT8000P
<b>CT480Z</b>	Paper pack for CT8000i
<b>ECG Trolley CT500</b>	Dedicated for use with the Seca CT3000, CT6 and CT8000 ranges of ECG machines.
<b>Alligator Clips</b>	4mm Universal Plastic Alligator Clips Pk of 10
<b>Electrodes SP-00-S</b>	Blue Sensor Disposable ECG Electrodes. Pack 50
<b>Electrodes</b>	Q-Trace resting ECG Disposable Electrodes - 500 per pack
<b>CT220</b>	Cardiacare Disposable ECG Electrodes
<b>NDC00000010</b>	ECG Gel Tube of 150 grams clear gel

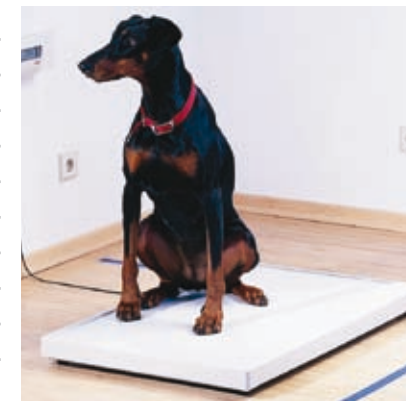


# Electronic Veterinary Scale

## Seca 606

### Electronic Veterinary Scale

- 20g to 20kg graduations.
- Can be used for small animals
- Kg/lbs switch over
- Batteries / mains
- Large battery capacity
- Automatic switch off
- Auto Hold function
- Tare function
- 3 step dampening
- Intelligent design



# Ultrasound Scanning Gel

## Vet Gel

Veterinary Ultrasound gel designed for convenience.  
Box of 12 x 250ml bottles



## Vet Gel

Offers high performance ultrasound conductivity at a permanently low price.

5Lt drum of gel includes 1 (250ml) dispenser bottle.



## Ultraphonic Conductivity Gel Sterile Packs

The only stabilized non-drying formula. Resists breakdown and thinning from salts in perspiration and body heat. Aqueous, hypo-allergenic, odourless, non-staining. Easy cleanup.



## Focus Gel stand off (1.5 cm)



Soft, pliable, biostatic solid gel pad. FOCUS Conforming Gel Pad stays in place easily conforming to contours and difficult body parts. Does not normally require holding.

Use FOCUS Conforming Gel Pads for quality near field imaging. If gel is needed, apply only to transducer contact side minimizing patient clean up.

# Disinfectant and Cleaning

Product	Description	Contents
<b>NDC36210225</b>	<b>T Spray II Probe Cleaner</b> T-SPRAY II cleans and disinfects all ultrasound probes and transducers, after each use and between patients. T-SPRAY II has a neutral pH and contains no alcohol. It is safe for equipment and is an effective bactericide and virucide killing HIV-1.	12 x 250ml bottles
<b>NDC000003</b>	<b>TriGene Trigger Disinfectant Spray</b> Medical surface disinfectant cleaner in a 500ml trigger spray bottle.	12 x 500ml bottles
<b>NDC000002</b>	TriGene Disinfectant Wipes 220/200mm	200 wipes
<b>NDC000002</b>	TriGene Disinfectant Wipes 185/135mm	100 wipes



# Diagnostic Sets

Product	Description
<b>i-Vet Portable Diagnostic Set</b>	2.5v Halogen Illumination Set <ul style="list-style-type: none"> <li>• Operating Otoscope Head</li> <li>• Ophthalmoscope Head</li> <li>• Nasal Speculum</li> <li>• Blade Holder</li> <li>• Selection of five Specula</li> </ul>
<b>Ri-Vet Portable Diagnostic Set</b>	3.5v Halogen Illumination Set <ul style="list-style-type: none"> <li>• Operating Otoscope Head</li> <li>• Ophthalmoscope Head</li> <li>• Nasal Speculum</li> <li>• Blade Holder</li> <li>• Selection of five Specula</li> <li>• Ri-Accu rechargeable battery</li> <li>• Ri-Charger battery charger</li> </ul>
<b>Ri-Former Wall Mounting Diagnostic Set</b>	Two Rheostat Handles, 3.5v Halogen Illumination Choice of instrument heads available: <ul style="list-style-type: none"> <li>• Operating Otoscope Head</li> <li>• Ophthalmoscope Head</li> <li>• Nasal Speculum</li> <li>• Blade Holder</li> <li>• Selection of five Specula: 62 x 5mm Specula</li> <li>82 x 5mm Specula</li> <li>82 x 6mm Specula</li> <li>82 x 6mm Specula with Slit</li> <li>92 x 9mm Specula with Slit</li> </ul>



# IMOTEK

## Service Department

Imotek Service department is staffed with Original Equipment Manufacturer (OEM) trained engineers providing peace of mind by ensuring that your system is working within the manufacturer's specification. We can also keep your system updated with the latest software & features.

Able to offer a wide range of services, including;

### Ultrasound & MRI

- Standard ultrasound service contracts;
  - Fully Comprehensive and Planned Preventative Maintenance.
- Veterinary Specific Ultrasound service contracts;
  - Tailored to cover your needs, giving satisfactory assurance without overspending.
- In-house or field service repair for non-contract holders at a billable hourly rate.
- In-house engineers able to offer telephone assistance
- Dedicated engineers available to attend emergency call outs



### Authorised Service Centre

Imotek are an authorised service centre for all **Sony** medical products including;

- Video Printers
- DVD Recorders
- LCD Monitors
- CRT Monitors

As a Sony Authorised Service Centre, Imotek can provide customers with fast access to professional product support. Imotek engineers are trained, managed and monitored by Sony so customers can expect the best possible service including rapid response and unrivalled technical expertise for complete peace of mind.

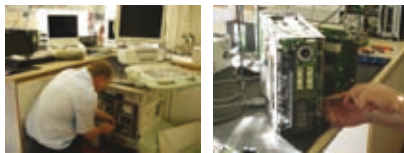
Imotek are also an authorised service provider for

- All **Mitsubishi** Medical Printers



### Quality Assurance Service

Our quality assurance service program provides peace of mind by ensuring that your equipment is working within the manufacturer's specification.



### Probe Repair and Exchange Service

Are your probes under performing?

Imotek operates an exchange service whereby a factory refurbished probe with 12 months warranty can be provided in exchange for your old probe.

If you are unsure if your probe is defective, Imotek can provide an exchange transducer on a sale or return basis.



The official and sole UK service provider for all Esaote equipment



Please contact us for further information & to discuss the options available to you.

**Telephone:** (01487) 843193 **Fax:** (01487) 843030 **E-mail:** [service@imotek.com](mailto:service@imotek.com)