

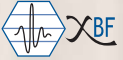
Extending Architectural Platform



eXtended Modular Architecture



eXtreme HF Imaging



eXtended Beam Former



eXtreme View - Xview Adaptive Image



eXtreme Focusing Technology



Real-time Multiview Imaging

New



MyLab70TM VET X_V

The unique dedicated high-level **Veterinary Ultrasound System**

Dedicated Veterinary Software Package:

- > Patient Data
- > Body Marks and Icons
- > Measurements and Reports

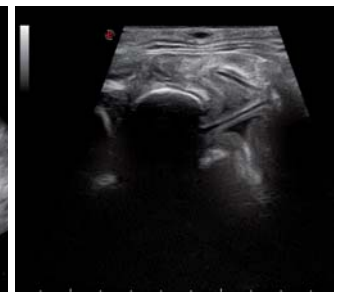
The unique dedicated high-level Veterinary Ultrasound System

This new high-end system has full veterinary features, while the extending technologies and solutions of the MyLabGold platform brought the image quality to the highest level. Major features like dedicated veterinary patient ID screen, dedicated structure of veterinary applications and presets, veterinary application icons and body marks, veterinary abdominal measurements, reproductive gestational age and cardiological calculations make this system a truly unique dedicated veterinary ultrasound system.

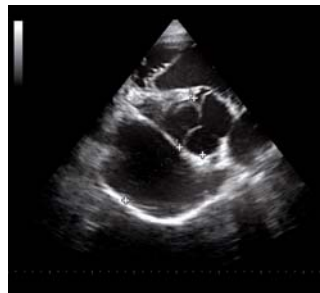
Advanced technologies like XView, MView, advanced cardio modes and the large number of probes offer a wide range of imaging processing tools to reach the highest level of clinical results in all the applications and all the modalities. The ergonomics of the MyLab70Vet XV confirm the premium class of this system: ultimate solutions to ensure unmatched user comfort and reduce repetitive stress injuries due to daily activities.



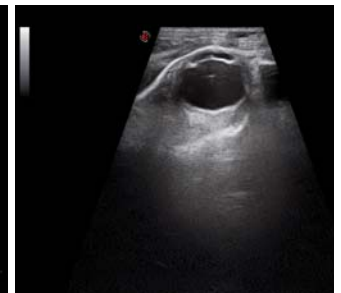
Canine liver mass



Equine gestation, foal head



Canine heart

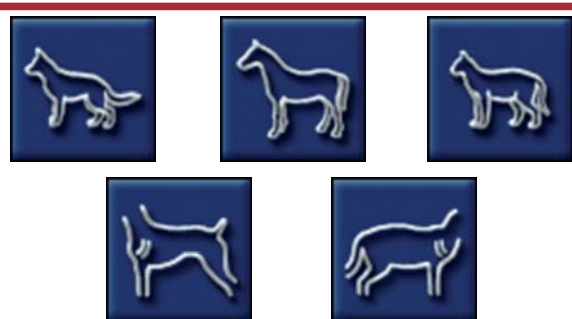


Equine gestation, foal eye

The screenshot shows a software interface with several sections:

- PATIENT DATA:** Fields for OWNER'S NAME, ANIMAL'S NAME, SPECIES, BREED, PERFORMING PHYSICIAN, ID, BIRTH DATE, AGE, GENDER, NEUTERED, and ACCESSION NUMBER.
- APPLICATION:** A list of application categories including Ovary, Repro, Abdominal, Cardio, and Tendon for both Equine and Canine.
- PRESET:** A section for selecting preset configurations.
- PROBE:** A section for selecting the ultrasound probe, with options like CA631 and LV513.
- WEIGHT:** A section for entering weight in kg or g.

VET Patient ID-Screen



Dedicated veterinary body marks

Extending Technologies and Solutions

Tp-View While using linear transducers and scanning extended structures especially useful in musculoskeletal applications, the Tp-View feature permits the field of view to be enlarged without losing resolution.

VPan Increasing the field of view in real-time scanning is a very important feature in musculoskeletal applications. Having the entire anatomical structure displayed on the screen in real time with additional zoom, Color Flow Mapping and measurement features increases user confidence and more accurate diagnoses are possible.

M-View Combined contributions of standard and steered ultrasound beams allow optimized image quality for comfortable detection of every anatomical structure and help to eliminate doubts in the final diagnosis.

CnTI™ (Contrast Tuned Imaging) Esaote's revolutionary technology in combination with the latest generation ultrasound contrast agents provides impressive clinical results due to precise micro-bubble detection. The MyLab Gold Platform perfectly manages this technology in all modalities, all applications and all probes.

Virtual Navigator Virtual Navigator is a revolutionary technology able to combine the advantages of real-time ultrasound imaging with CT/MR images' high spatial and contrast resolution. Virtual Navigator is fully integrated in the systems, enabling the user to easily switch between Fusion Imaging and the standard environment.

Advanced Package The MyLab Gold Platform allows detailed evaluation in several applications. In particular, the Advanced Cardiac Package provide the most updated methods and technologies available for precise assessment of heart functionality.

